



**iSWITCH**

---

# SISTEMAS DE GESTIÓN DE ENERGÍA ENERGY MANA- GEMENT SYSTEMS

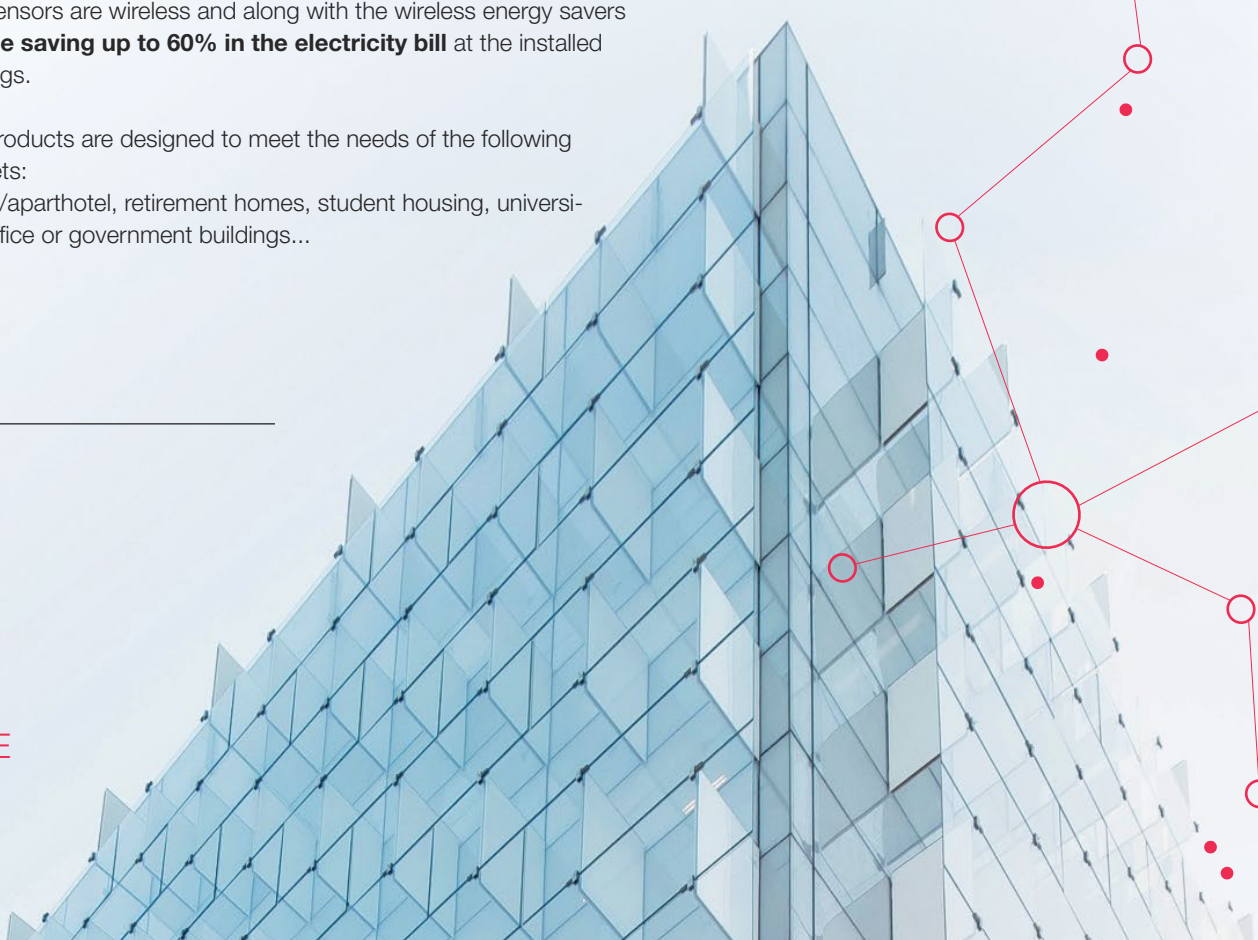
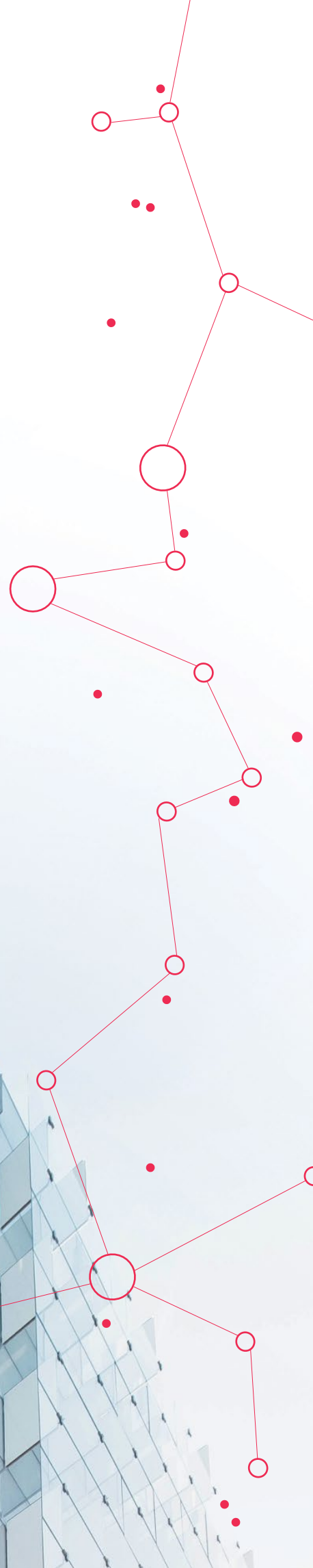
## Recessed door-window sensor

Our sensors are wireless and along with the wireless energy savers **enable saving up to 60% in the electricity bill** at the installed buildings.

Our products are designed to meet the needs of the following markets:  
hotels/aparthotel, retirement homes, student housing, universities, office or government buildings...

---

**WE MAKE  
SENSE**





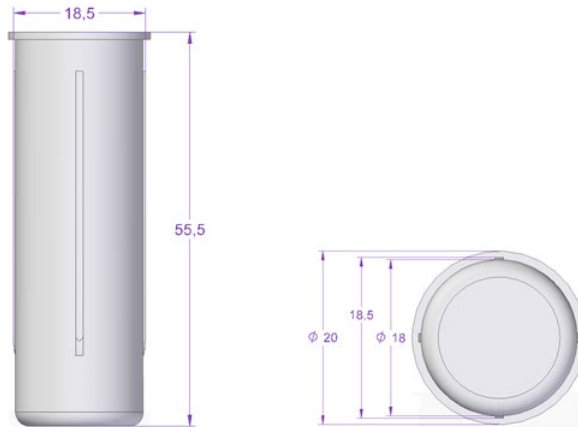
# RECESSED DOOR- WINDOW SENSOR



## Characteristics

DESCRIPTION	Recessed door- window sensor
REFERENCE	SPExlxS
POWER	Premium 1,5V LR 03 alkaline battery
BATTERY LIFE	4 years (average consumption 14uA, max 20mA) with 20 opening/ a day.
COMMUNICATIONS	2,4GHz, IEEE 802.15.4 wireless
COMMUNICATIONS COVERAGE	10 m (max distance to the energy saver)
INTERFACE	Red led.
OPERATING TEMPERATURE	-10° to 50°
TECHNOLOGY	Magneto-resistive sensor+ magnet
SENSOR-MAGNET DISTANCE	2 cm max separation. A slight separation is highly recommended.
MATERIAL	"Latamid 6H2 G/30-VOCT1 (according to norm UL 94 V-0)
DIMENSIONS/ WEIGHT	Sensor (φ 20 mm x 55,5mm) and magnet (φ 25 mm x 2mm)/ 17 g

## Dimensions



## Benefits

**WIRELESS COMMUNICATION.** It detects the door and/ or window status and informs the energy saver.

**STANDALONE** Battery operated.

**INSTALLATION.** It can be installed either inside the door or window

(non metallic recommended).

**EASY TO INSTALL.**

**CONCEALED.** It stays hidden inside the door or window, providing more safety against tampering.



Enkoa System S.L.

Polígono Erramone 45, 20850 Mendaro. Gipuzkoa. Spain  
**T** +34 943 757 000 | info@enkoea.com  
[www.enkoea.com](http://www.enkoea.com)

